

# GUINEA GOLD MINE BUSINESS PLAN



N A GLOBAL  
REALTY & INVESTMENT LTD





# About NA GLOBAL

N. A. Global is specialised in  
consultating, facilitation and  
harnessing of business  
opportunities

We ideate, create access, and  
connect people and  
opportunities.

One core focus areas are Mining  
of precious minerals, exporting  
precious minerals, Construction,  
Agriculture, and Real Estate.

<http://www.nagril.com>



# Meet the NA GLOBAL Team



**Eric Nii Ady**  
Chairman/  
Managing



**Kobina B. Woode**  
Executive Director, FIN.  
ADMIN



**Gabriel Ajibade**  
Director  
Non Executive



**Cem Tekin**  
Geological Engineer



**Roland Renne**  
Technical Consultant



**Dr. Tugcan Tucz**  
Mechanical Engineer



**Ismail Hakan Buzcu**  
Plant Engineer

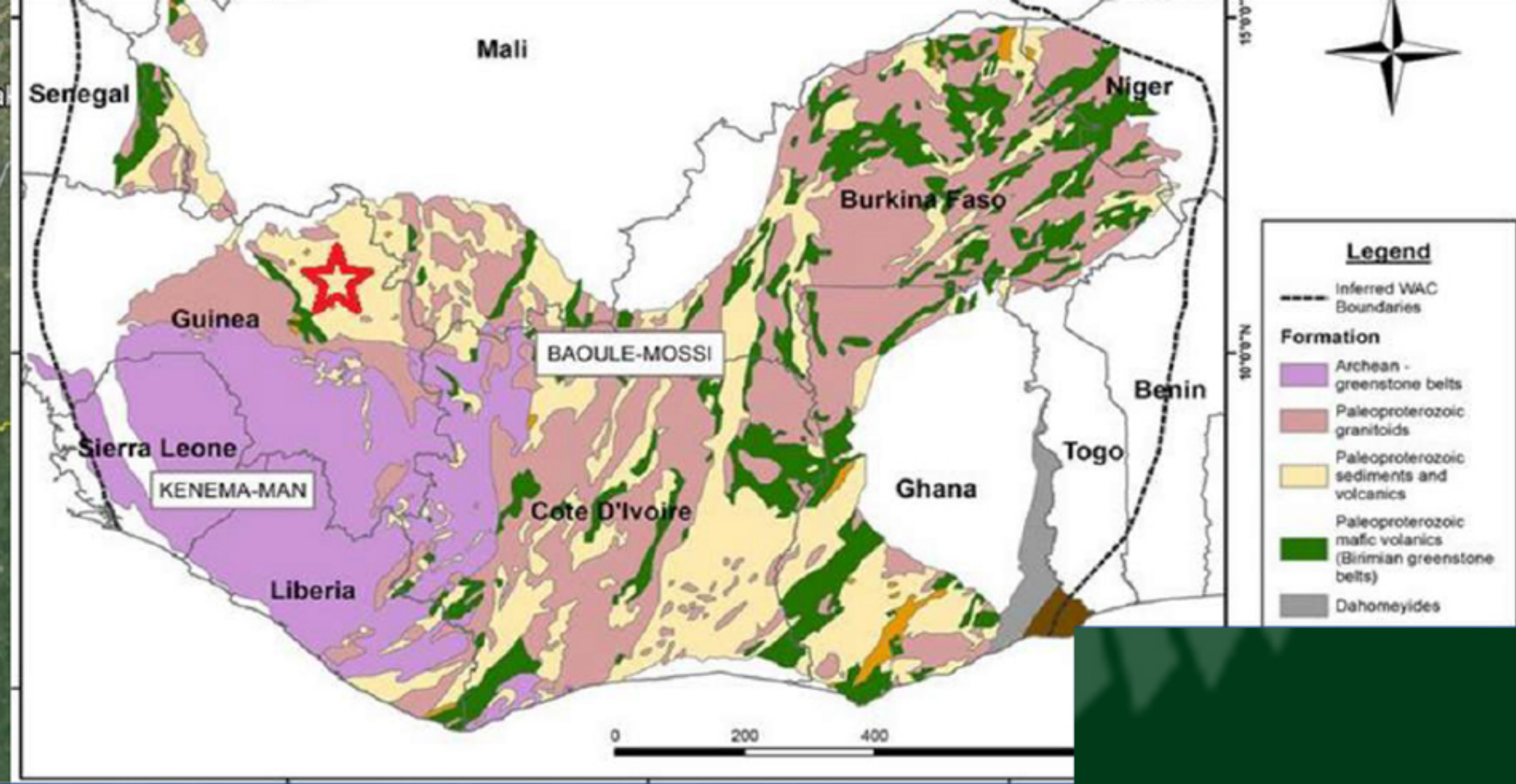
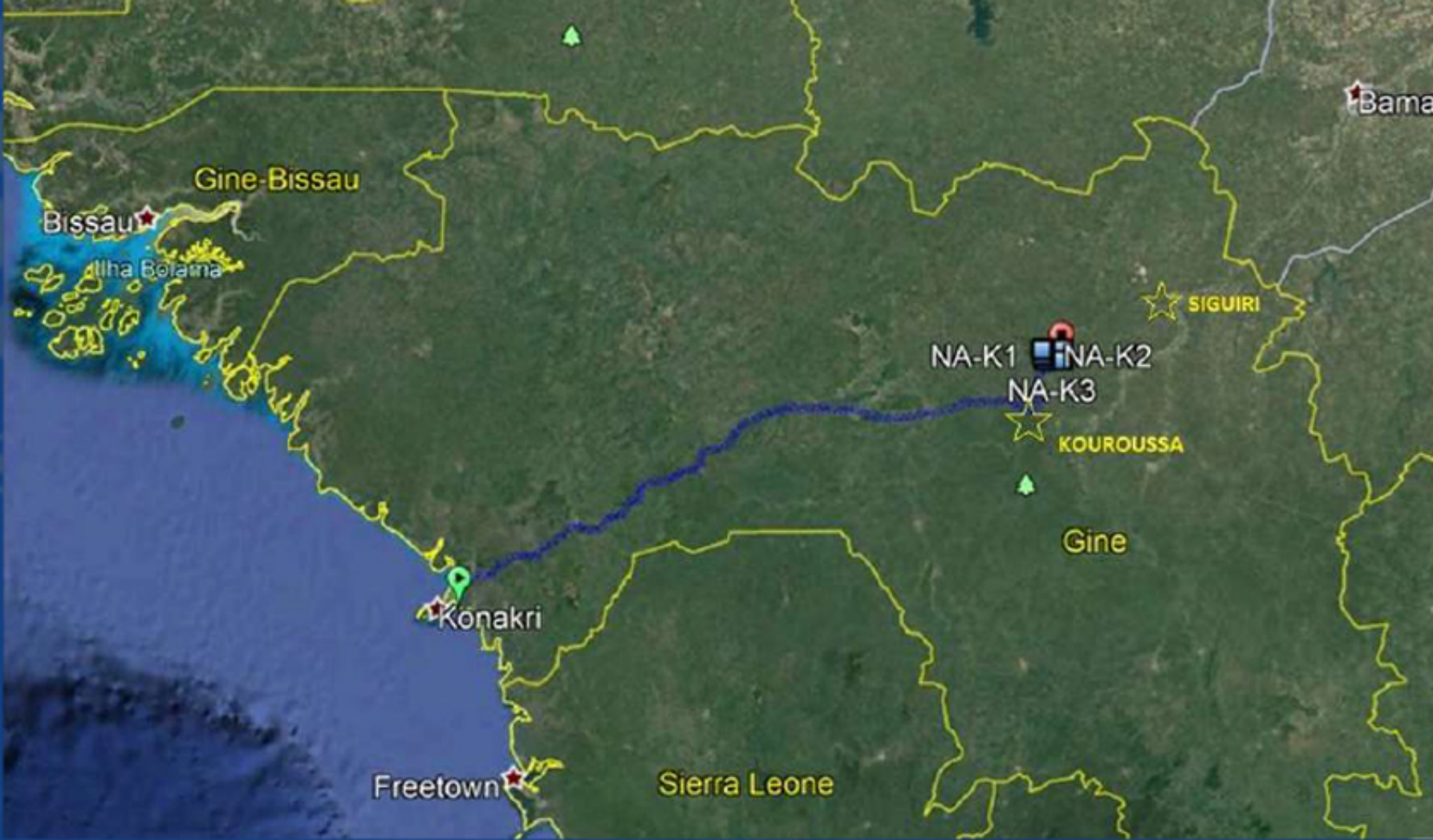


# About the **MINING PROJECT**



The field is around Kouroussa are in Siguiri Basinin East Guinea. To reach the site it is only by car/road from the capital Conakry and Bamako(Mali). The roads are mostly stabilized and need off-road cars. But the main road is under construction and are planning to finish the asphalt in about a year





# About the MINING PROJECT

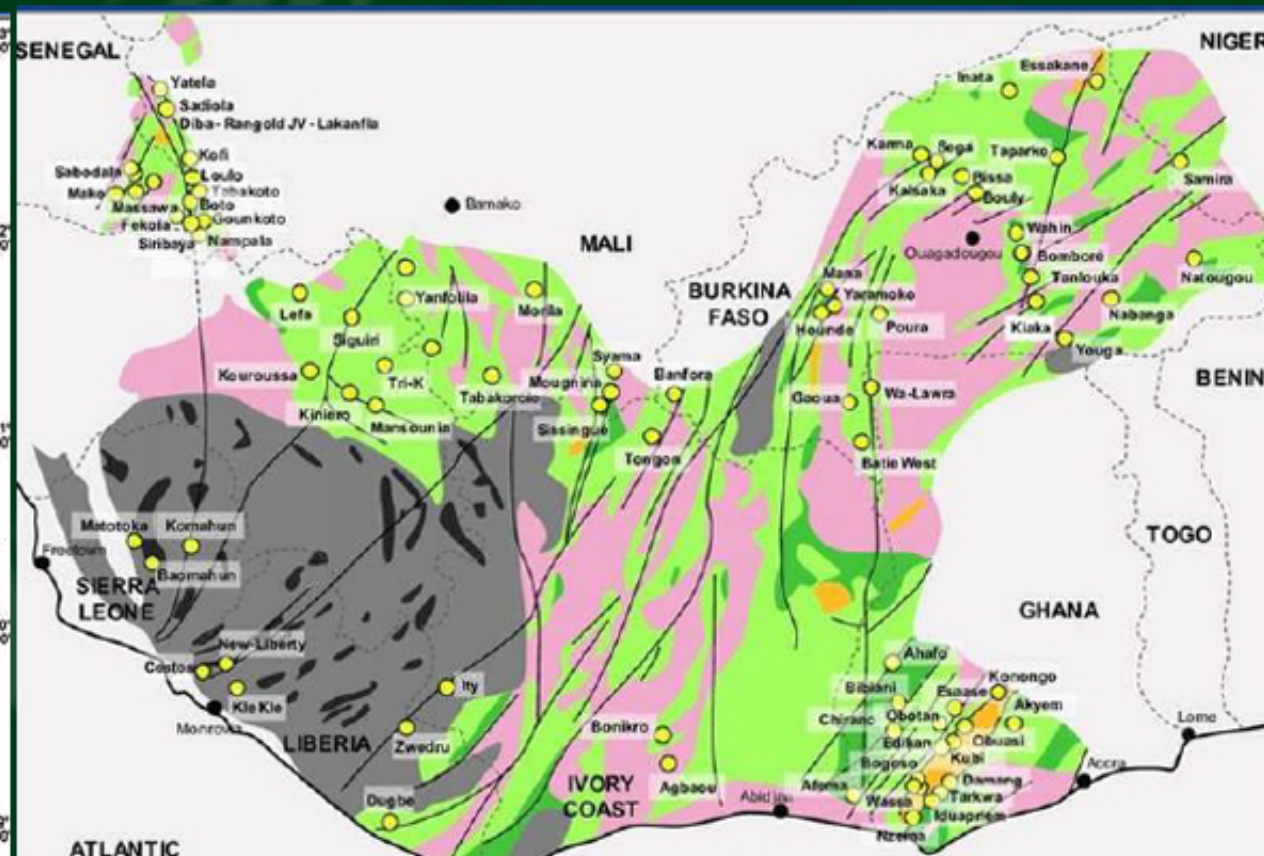
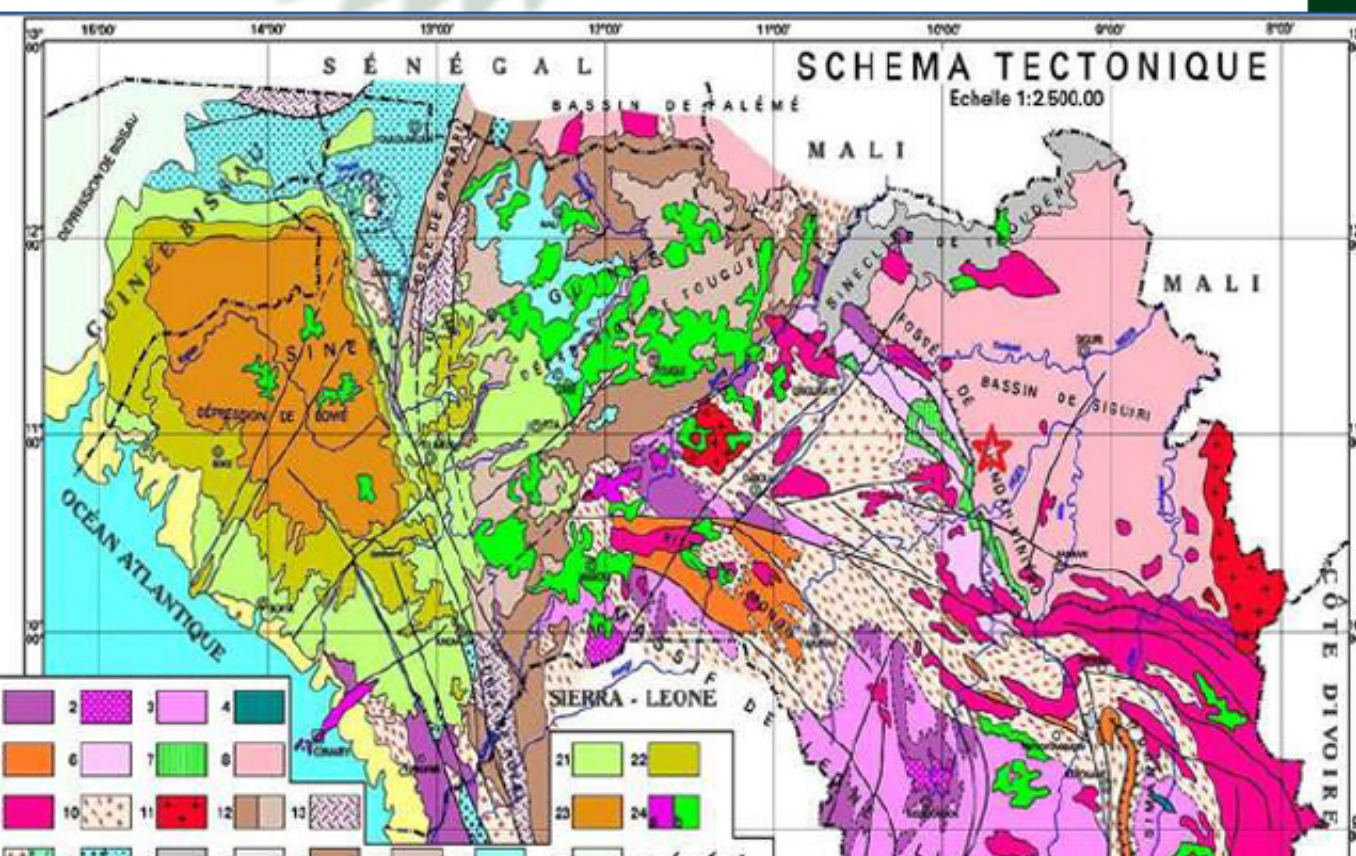
There is no professional Geological study and/or report of site since we reached to the site. there is a geophysics maps of concession from guinea Mining Ministry and it shows that the area is semi potential area for presence of gold. There are several Exploration and Exploration licences around the field and the area is in a good position of Birimian Greenston Belt. The all area is covered by Laterites, Saphrolites and Quartz. the potential Exploitation Area is completely cover by alluvial sediments



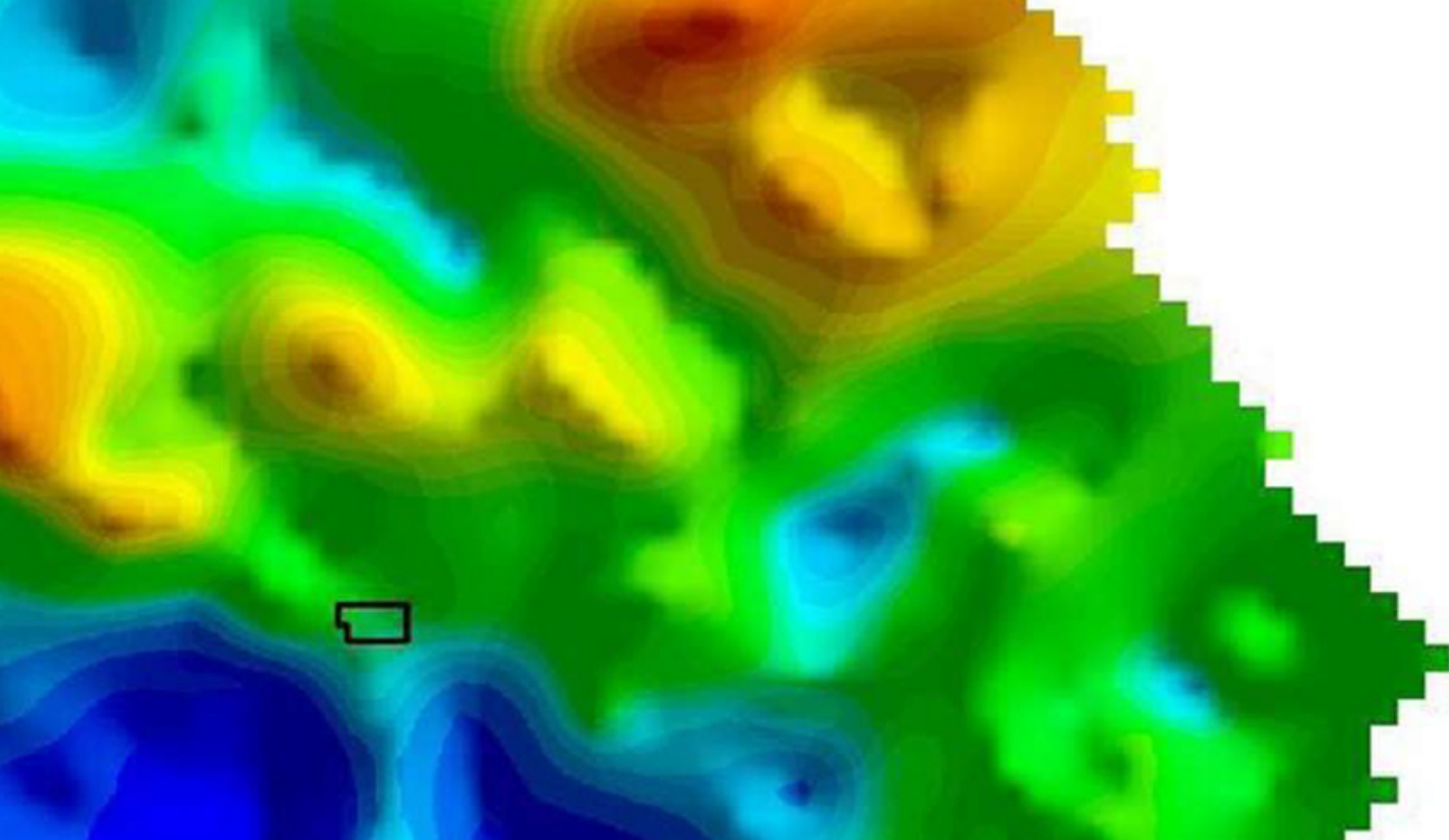
# About the MINING PROJECT

## GEOGRAPHICAL LOCATION

Concession is in the Siguiri Basin in East Guinea and depicted as a red star. This basin is in the West African Birimian Greenstone Belt Zone and this zone has unusually large potential of gold production.







No	Company	Company Base	Project Name	Project Country
1	Goldwater	Sweden	Karakani Gold Mine	Gulnea
2	AngloGold	South Africa	Sigulri Gold Mine	Gulnea
3	Gulnea Gold	London	Gulnea Gold Mine	Gulnea
4	Nordgold	London	Lefa Gold Mine	Gulnea
5	Pearlgold	Germany	Kodleran Gold mine	Gulnea
6	Endeavour Mining	London	Kalana Gold Mine	Gulnea
7	Cassidy Gold	Canada	Kouroussa Gold Mine	Gulnea
8	Sycamore Mining	Cyprus	Kinlero Gold Mine	Gulnea
9	Hummingbird Resources	London	Yanfolla Gold Mine	Mali
10	Avocet Mining/ Managem	London/ Casablanca	Tri-K Gold Mine	Gulnea
11	African Gold Group	Canada	Cobada Gold Mine	Mali
12	Mali Lithium	Australla	Dankassa Gold Mine	Mali
13	Mali Lithium	Australla	Morila Gold Mine	Mali

The is only a remote sensing study for sites. It shows that the conession has very good potential for exploration. The gravimetric maps show that the red zone are mostly potential areas. The IP system and blue is zero potential areas. The IP system and other Geophysical studies will show us the local and detail potential of gold and alluvial thickness





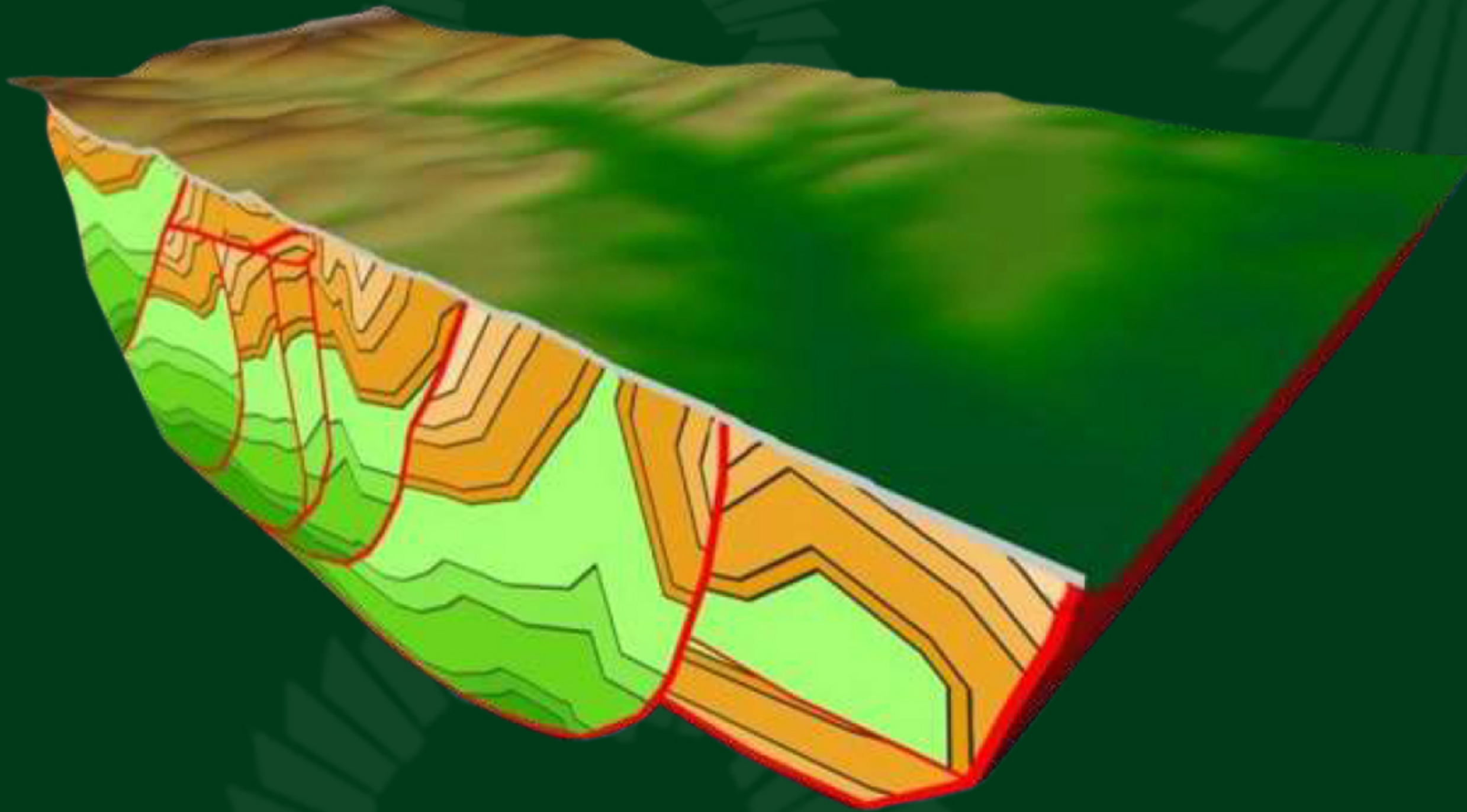
Geochemical aureoles of the gold mineralisation in the basin of Siguir, where gold is known for 100 years and where 100g/t has been found



# THE LICENSE ON GEOCHEMICAL AUREOLE OF GOLD MINERALISATION



# LITERATURE SEARCH FOR SITE



The academic study conducted by Manedov in 2010 proved the presence of gold up to 100g/t in the areas indicated by the red line indicated on the map. A good geophysical study in the field that is very close to these areas will be very useful



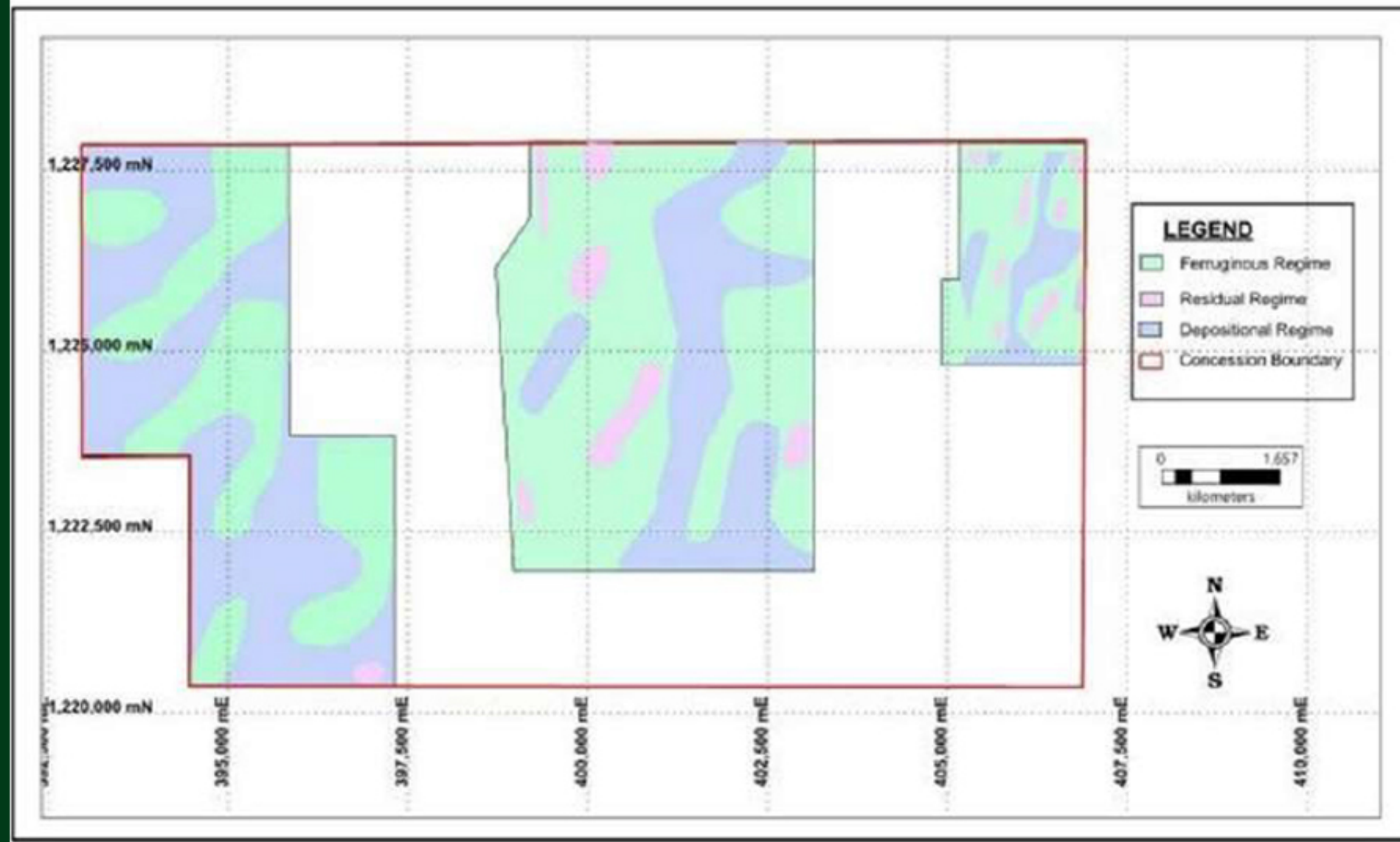
# 2022 SITE STUDIES

Target	Alluvium samples	Colluvium samples	Ferruginous Samples	Residual Samples	Total Original Samples
North East	8	52	73	17	150
Seraninkro	37	87	178	28	330
Sagbakro	48	127	123	5	303
<b>Total</b>	<b>93</b>	<b>266</b>	<b>374</b>	<b>50</b>	<b>783</b>
<b>Percentage</b>	<b>11.88</b>	<b>33.97</b>	<b>47.77</b>	<b>6.39</b>	<b>100.00</b>

## SOILING STEP COMPLETED IN 2022

Soiling step completed in 2022

A soil sample study, which lasted for several months in the field, was carried out in 2022. The sample is sent to the laboratory from the sample accelerated using a hand-held XRF machine.



Beginning of FAP02

Completed FAP02

Image showing excavated alluvial test pit



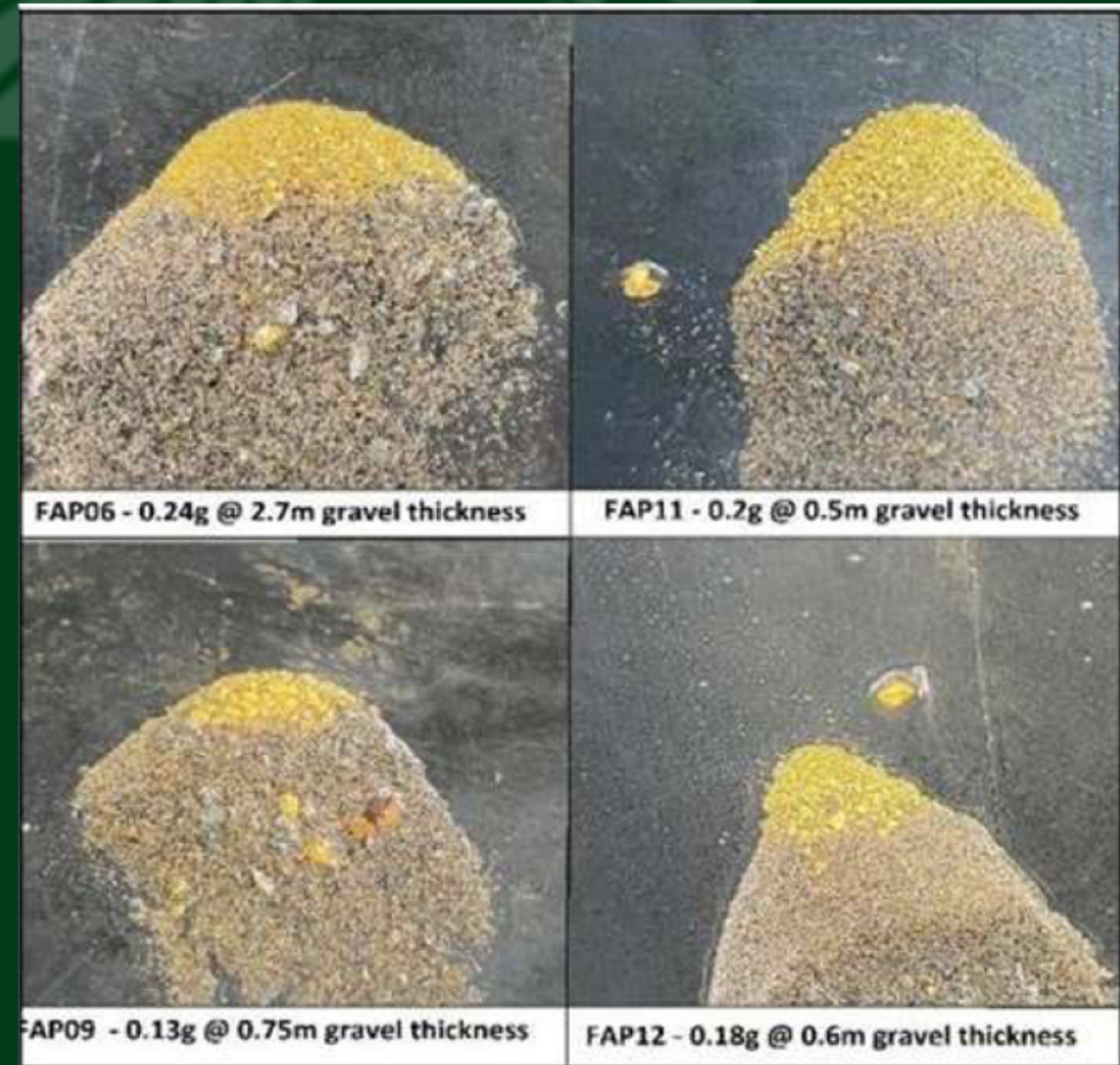
# 2022 SITE STUDIES



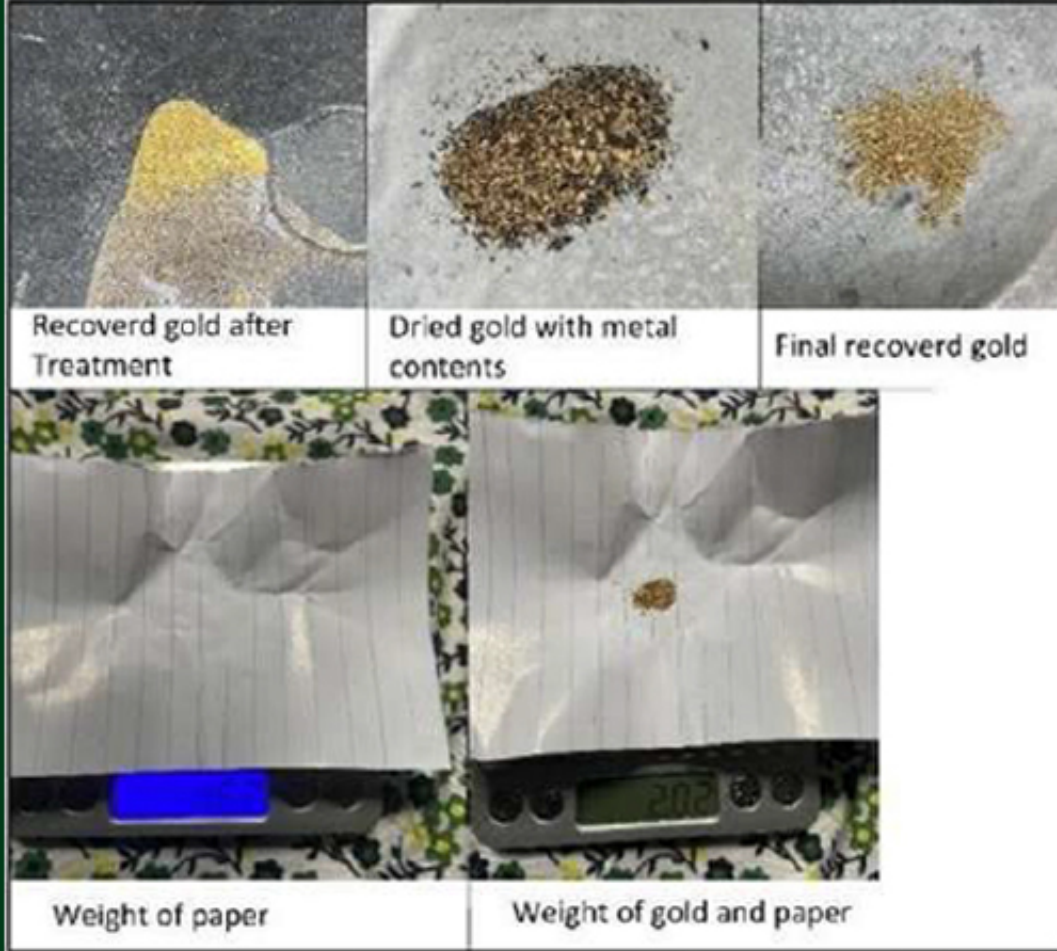
Schist Mapped at Lilinkoni South



Geologist observing a unit within an artisanal pit







# 2022 SITE STUDIES

A total of seven hundred and ninety-five (795) samples comprising of nine (9) rock chip and seven hundred and eighty-six (786) soil samples (see table 4) were submitted to SGS Bamako Laboratory, for gold analysis by Aqua Regia (ARE145) and Fire assay (FAA505). Assay results of first batch of samples have been received awaiting results of the second batch of samples.

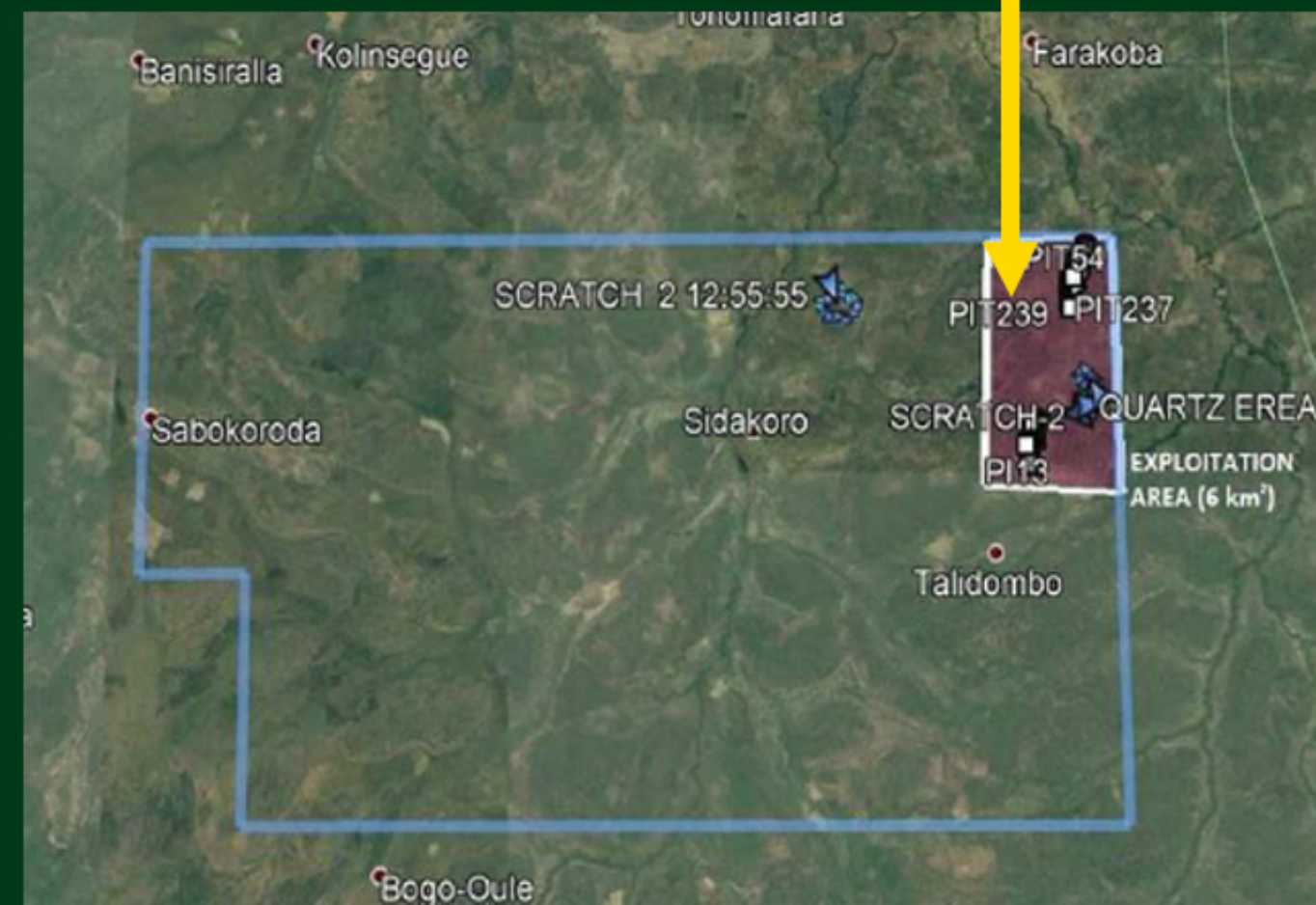
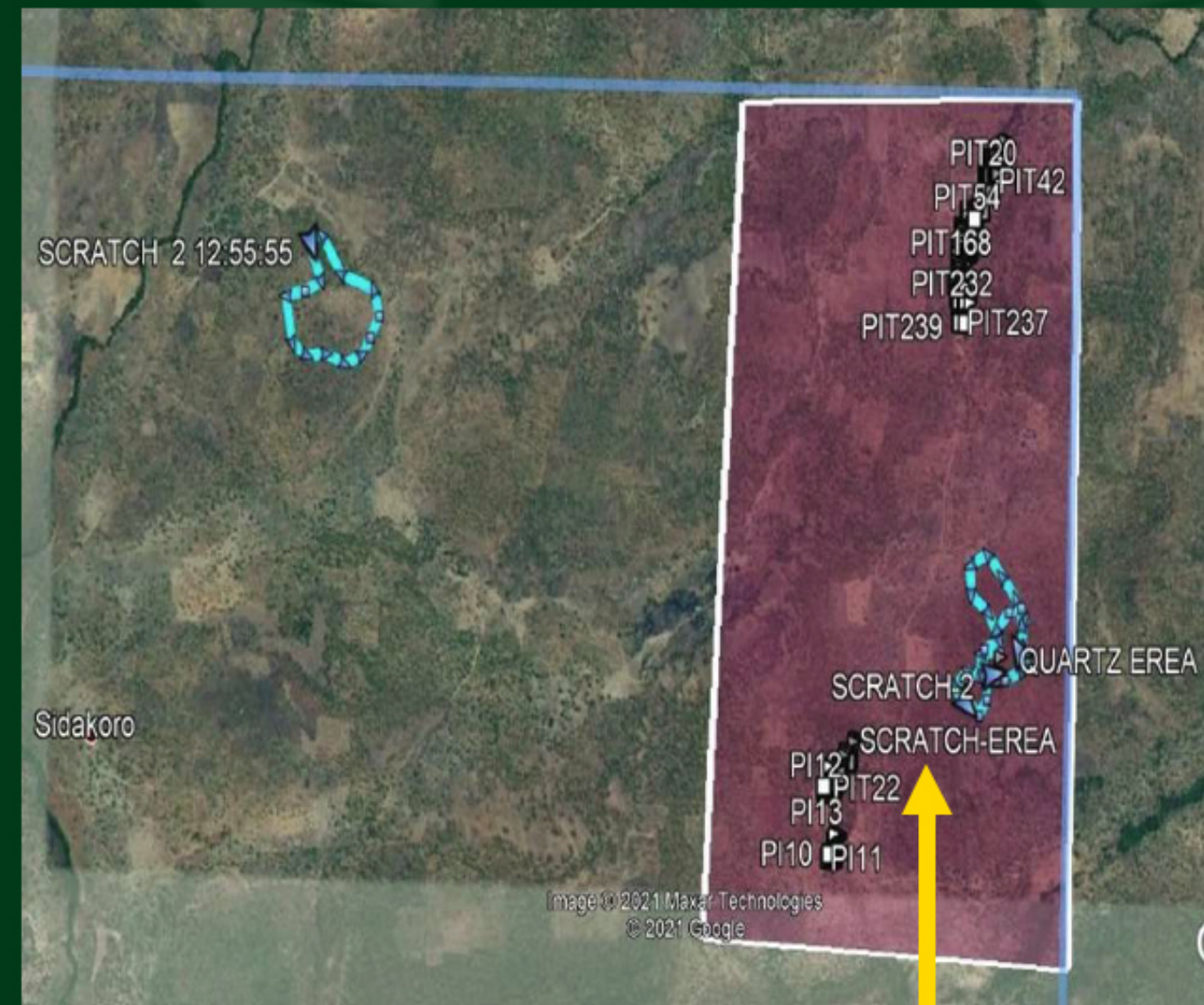
**Table 6: Details of samples submitted to the laboratory**

Batch No	Sample Type	Sample ID		No. of Samples	Analysis Type
		From	To		
SUBFS001	Soil	FSS00001	FSS0153	153	Aqua Regia-ARE145
SUBFR001	Rock Chip	FRS01	FRS03	3	Fire Assay-FAA505
SUBFS002	Soil	FSS0154	FSS0786	663	Aqua RegiaARE145
SUBFR002	Rock Chip	FRS04	FRS09	6	Fire Assay-FAA505
<b>TOTAL</b>				<b>795</b>	



In the South of Farakoba Village, you can see the Artisanal holes around the Farakoba River. The holes are about 60cm wide and 10m deep. The villager says that they cannot continue after 10m because of water. It means we don't have any idea for the thickness of alluvial depth. There are another scratching areas in the concession but they need more exploration.

To start, the company will apply Exploitation Licence for 6km<sup>2</sup> area. With next explorations, the area can be further expanded.



POTENTIAL EXPLORATION



- 100 Ton/Hour Mine facility
- 2 shift with 10hours; 16hours real working per day.
- 24 days per month working days of month
- Estimated 50.000Mt. Month production.
- 25.0kg gold production for average 0.5ppm (gram per ton)



# GOLD PRODUCTION FORECAST

Prices are as per "Raw Gold" under World Market Prices: for 0.5ppm

**Monthly Poduction**  
1,200,000\$

**Yearly Production**  
14,400,000&

**10 Years Production**  
144,000,000&



# RESERVE CALCULATION

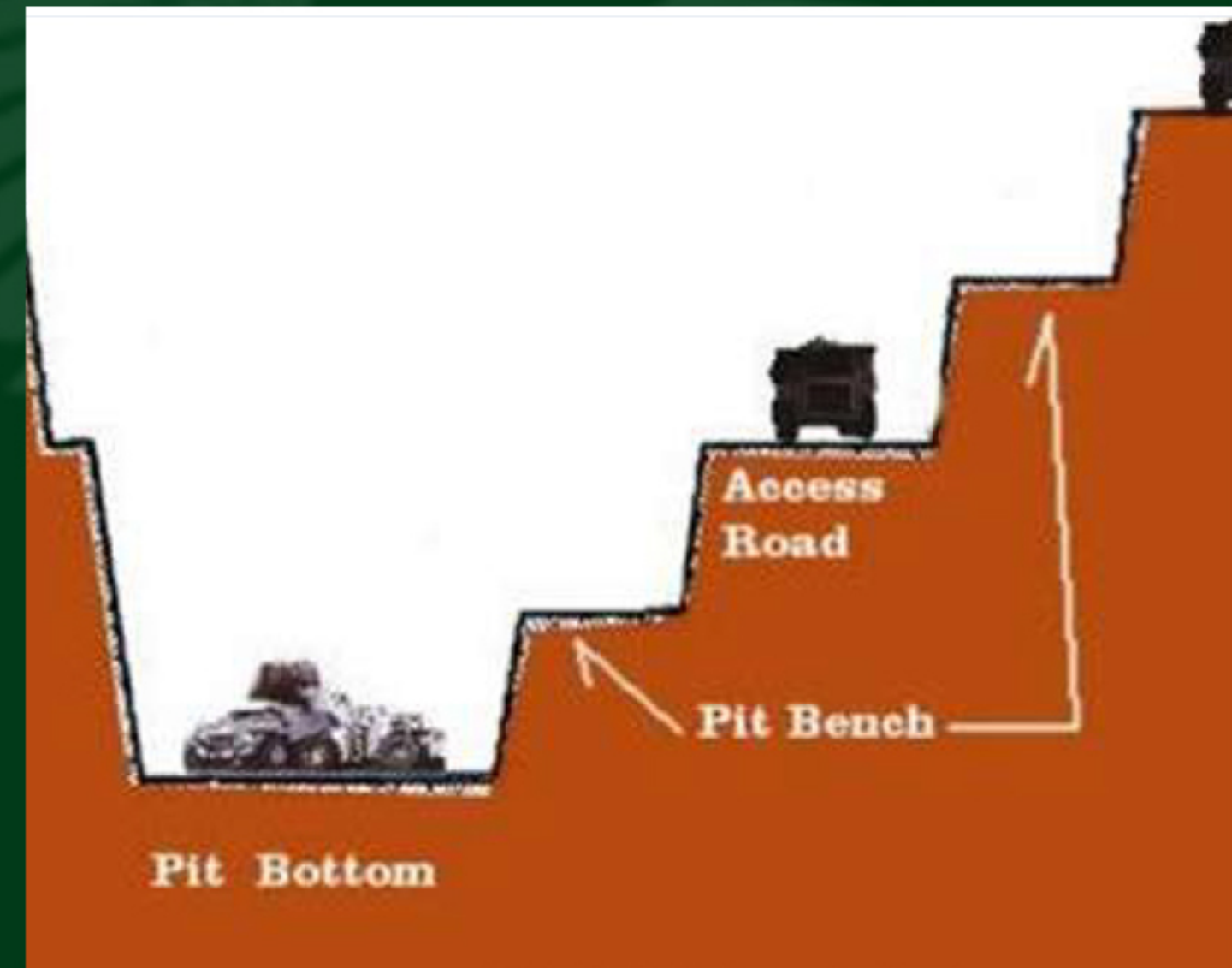
First Open Pit Area	-	200.000m <sup>2</sup>
Alluvial Zone	-	15m(*)
TOTAL	-	3,000,000 m <sup>3</sup>
Average Density	-	2,0 ton/m <sup>3</sup>
TOTAL RESERVE	-	6,000,000 ton (*)
Monthly Facility Loading Amount	-	20,000 ton





Engineering (3 Engineer, 30 Workers)	-	70.000 USD
Equipments (Car, Gasoline, Step eqp. Tickets etc)	-	100.000 USD
Other Fees	-	80.000 USD
MONTHLY TOTAL	-	250.000 USD
YEARLY TOTAL	-	3.000.000 USD
MINE LIFE EXPENSES (10 YEARS	-	30.000.000 USD

# RESERVE CALCULATION



The real alluvial thickness will be clarified after Geophysical Studies. This forecast demand on artisanal situation at site. Reserve should be revised after geophysics





## **EXPLOITATION LICENSE AND PROCESSING**

An Exploitation License in Guinea mean Government gets 15% of your company for the Exploitation License. There is freedom to import goods and services needed by your company, with no limit on big transactions. After melting the gold bars to the airport. After weighing and determining the value of the delivered gold bars, they store them in a closed safe and deliver the keys to the company officials. After the destination country and delivery contact information is recieved, the central bank personel hands over the gold to the specified country. there is a 5% tax and 1.5% transaction fee paid by the company.



# GOVERNANCE LEGALITISE & LICENSING

if you want to invest guinea, government is keen on to help for investor companies. there is a government office to support tthis kind of business is APIP ([www.apip.gov.gn](http://www.apip.gov.gn)). According to the previews we made from the ministry of mining and APIP, they recommend establishing a new mining company and transferring the license to work with this company. because all taxing and other benefits apply only to a mining company. and transaction will be difficult for a company doing other business



## Useful links

- [Studies and Statistics](#)
- [Synergui](#)
- [Investment opportunities](#)
- [Submit an investment request](#)
- [Living in Guinea](#)
- [Useful documents](#)

## Our Head Office

- [Boulbinet, Conakry- Republic of Guinea](#)
- [info@apip.gov.gn](mailto:info@apip.gov.gn)
- [\(+224\) 656 31 11 13 || 656 31 11 14](tel:+224656311113)
- [Get directions](#)

[Newsletter](#)



# PROSEPECTOR POTENTIAL GEOLOGIST FINDINGS

## NI 43 101 - GEOLOGICAL REPORT

With 5% of income, we can start drillings plans and other Geological studies to prove the all-field's. the project has a proven reserve now with potential value of +/-400% over the next 3-5years, conservatively. The goal would be to make the field bankable by preparingthe report of the field by impartial 3rd party companies.

## CIL PLANT FOR FURTHER PRODUCTION

Laboratory analysis of the samples to be taken during the production phase will also be made to determine which type of leach system is suitable and basic engineering studies will be started. after a total of 2-3 years the facility construction will be completed, and progress wil be made for world-class mining.





**N A Global Realty and Investment Limited**  
*Projected Fund Required*

<b>Assets</b>	
Sites establishment and legal fees	50,000USD
Equipment for geological Explorations	2,400,000 USD
Engineering	50,000 USD
Lab fees	50,000 USD
Facility Engineering	50,000 USD
Geophysics works	200,00 USD
Facility fee	1,500,000 USD
Engineering & Purchasing & Transport	300,000 USD
Construction	500,000 USD
Earthwork Equipment	700,000 USD
Generator	100,000 USD
Prefabricated structures	250,000 USD
Other fees	350,000 USD
<b>Total</b>	<b>6,500,000 USD</b>
<b>Operating capital</b>	
Salaries and wages	384,543 USD
Raw inputs	1,200,000 USD
Other administrative expenses	2,250,000 USD
Total operating capital required	3,834,543 USD
Less available working capital	334,543 USD
<b>Grand Total</b>	<b>10,000,000 USD</b>

# INVESTMENT PROJECTION

**TOTAL INVESTMENT PROJECTION: US\$10M**







**NA GLOBAL**  
REALTY & INVESTMENT LTD

## GLOBAL OFFICES & INTERNATIONAL REPRESENTATION



**GUINEA**  
ALMAMYA, COMMUNE OF  
KALOUM-CONAKRY



**GHANA**  
NII OBODAI CLOSE,  
MEMPEASEM EAST LEGON-ACCRA



+233 206 998 018



<http://www.nagril.com>

