

NA GLOBAL INVESTMENT has been granted an exploration permit, that covers 99,99km² located within a basin of Siguiri, and valid for 3 years. The permit is sitting in the zone of intense gold mineralisation of Siguiri region, where many important gold companies are operating, including Ashanti gold. It is in the regional geological structure of gold mineralisation, where gold is known for 100 years and where 100g/t has been found(Mamedov 2010)

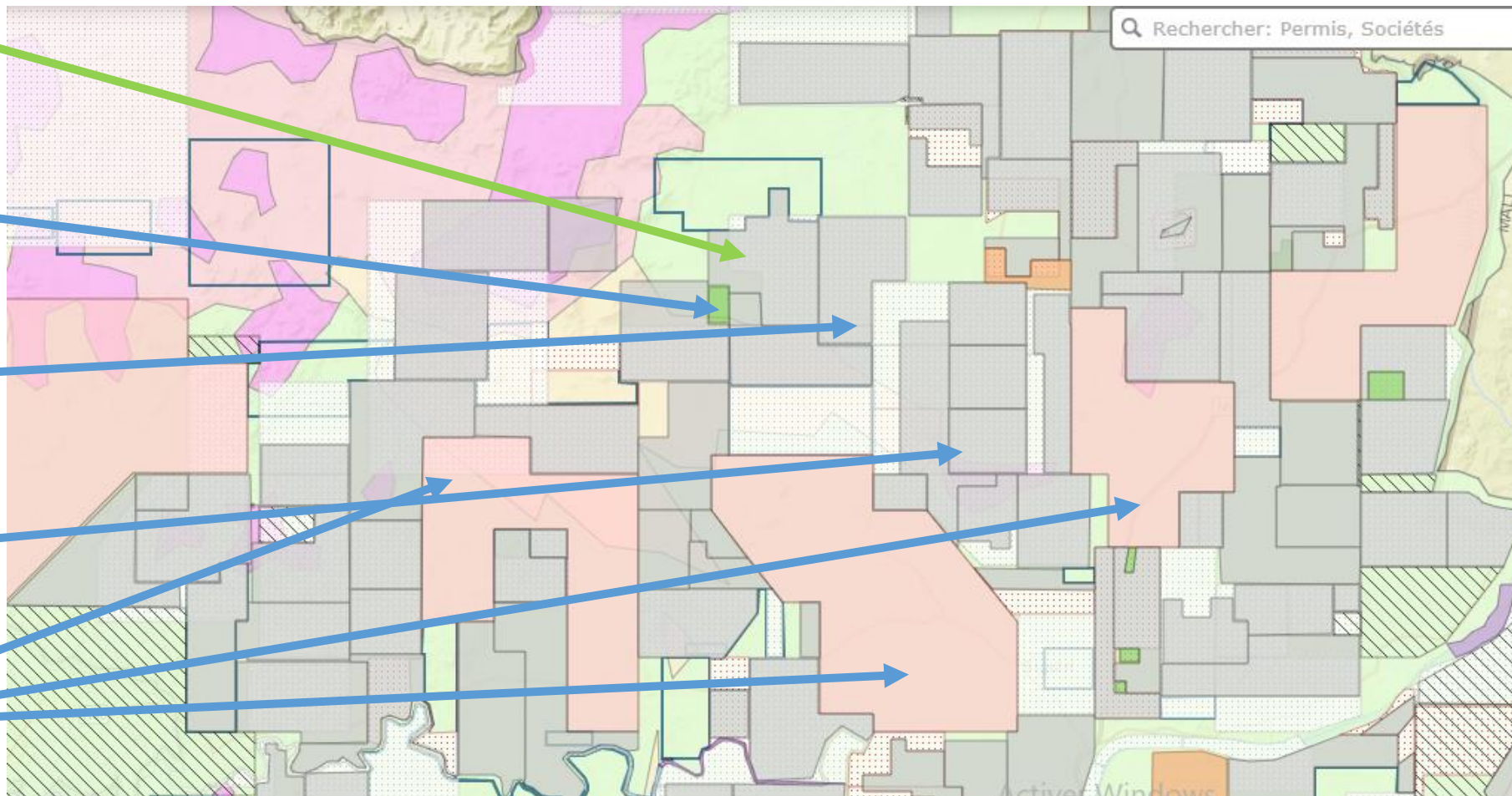
**NA
GLOBAL**

**VEP Group
Sarl**

SOGUIPAMY

**Endeavour
Guinee**

SAG



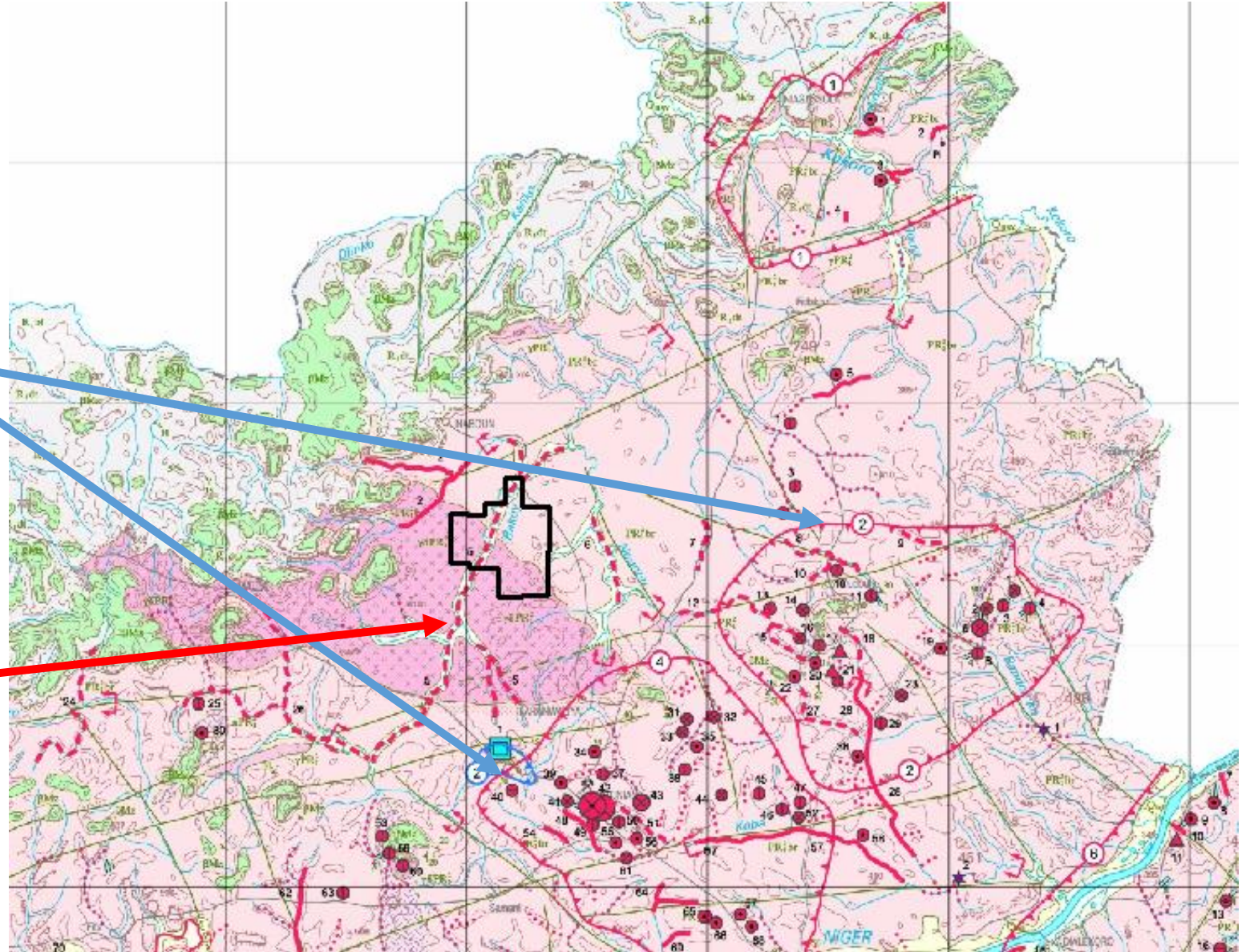
NA GLOBAL REALITY INVESTEMENT LTD SUCC Neighbors

- **SAG** (Société AngloGold Ashanti Gold) flagship mine 40 - 45KM NE. Proven reserves and resources of 9 Moz at present @ 2,3gr/t exploration ongoing. 2018 approx. 212,984 oz production
- **NA GLOBAL** licence is in the same geological feature as the companies above. The mineralization flow is in the same direction,
- **SOGUIPAMY** a close neighbour of NA Global is government department that hold many licences in different commodities.
- **VEP Group Sarl** own a mining permit on the mineralised river that crossed NA-GLOBAL licence,
- **Endeavour Guinee** Located to SE of the permit has completed a significant geological work including the geochemical sampling and RC drilling planning

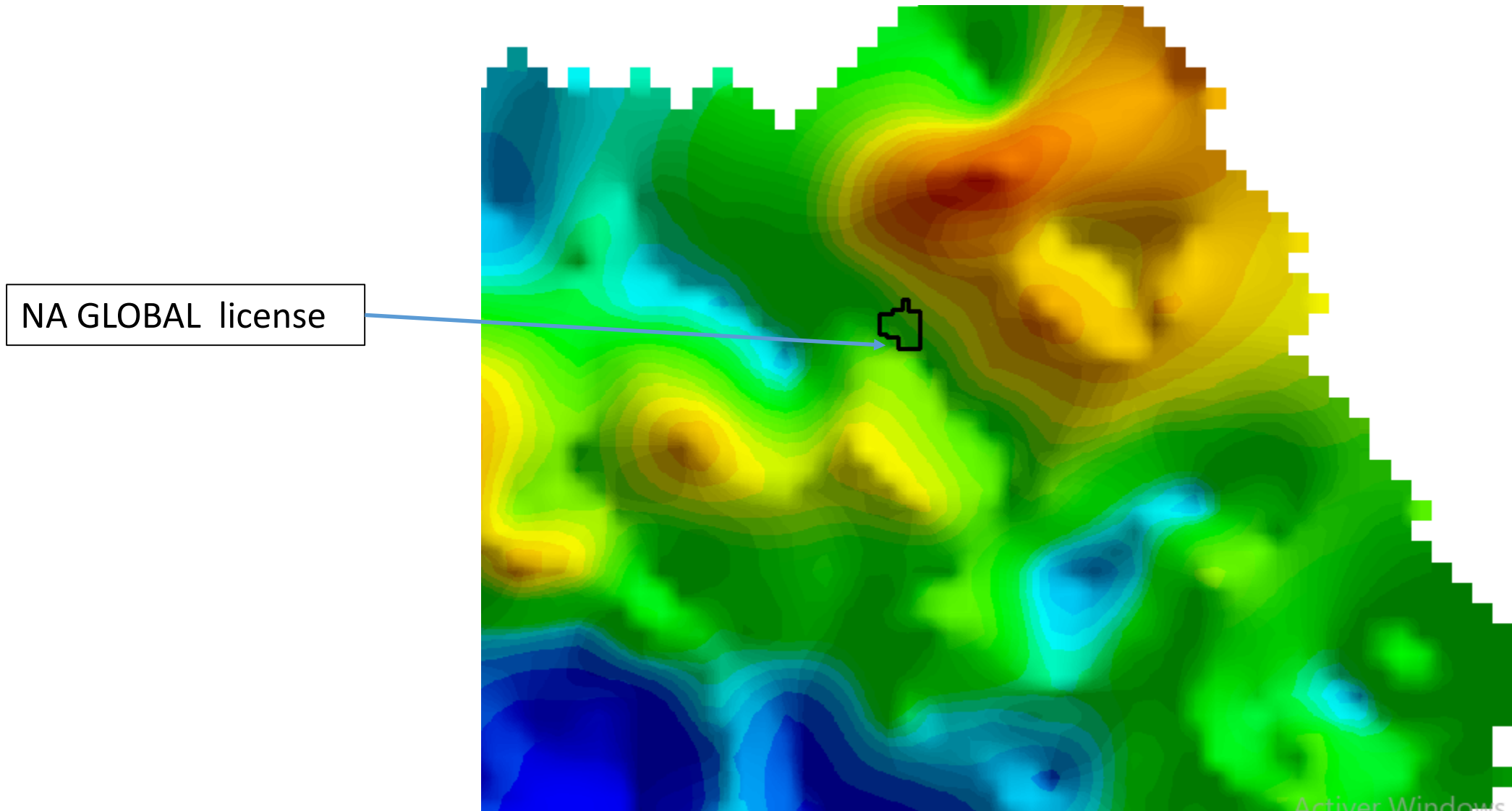
The licence on geological map

Geochemical aureoles of gold mineralisation in the basin of Siguirin, where gold is known for 100 years and where 100g/t has been found (Mamedov 2010)

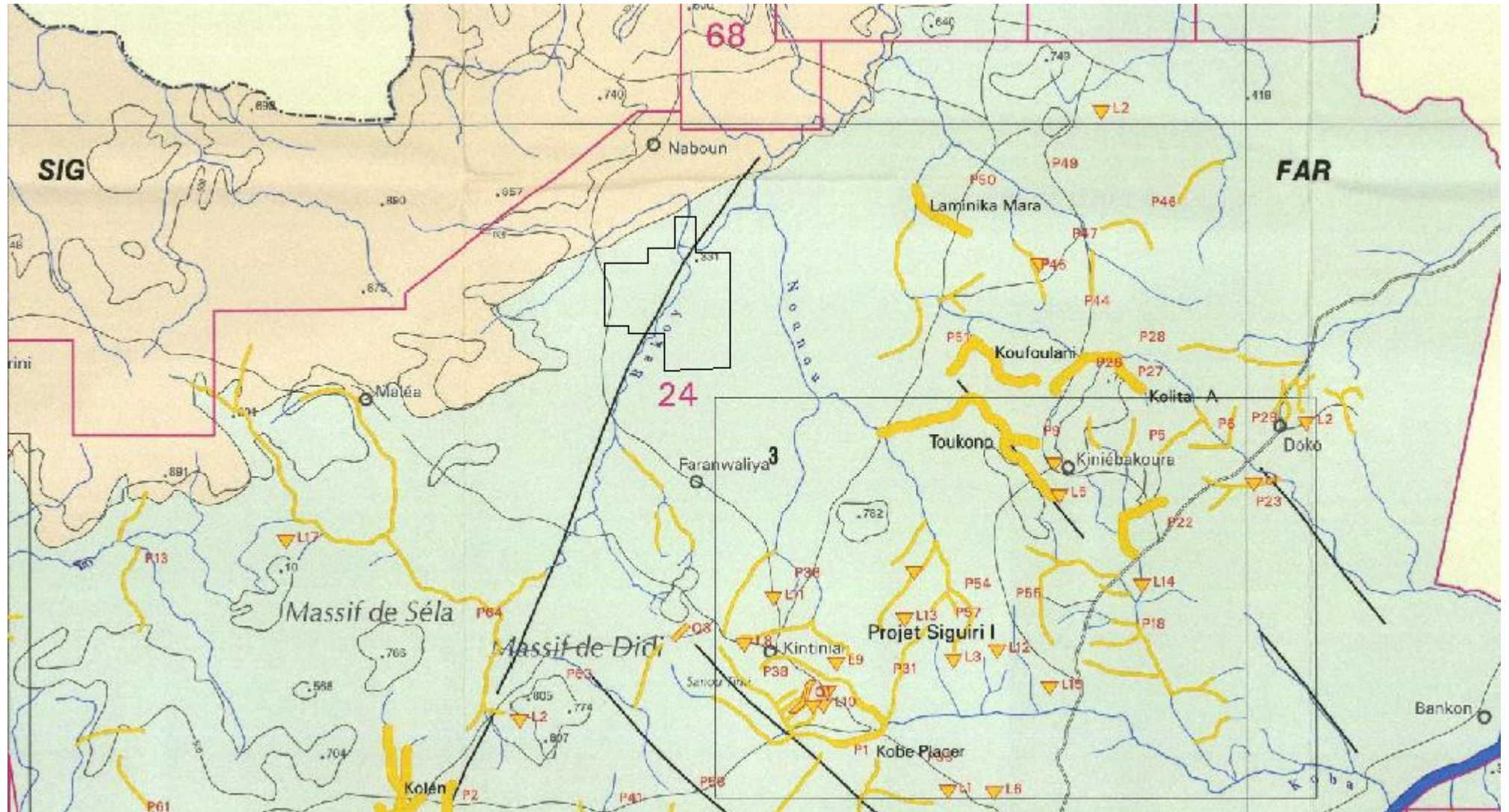
The river that crosses the permit is mineralise all along, with a semi-industrial permit to the south of the permit



The licence on regional gravimetric anomaly



The licence on mineral occurance map



The licence on Digital Elevation Model

